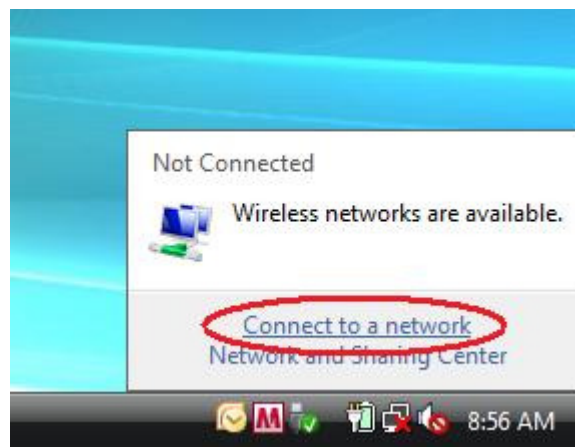


## Student Wireless Installation

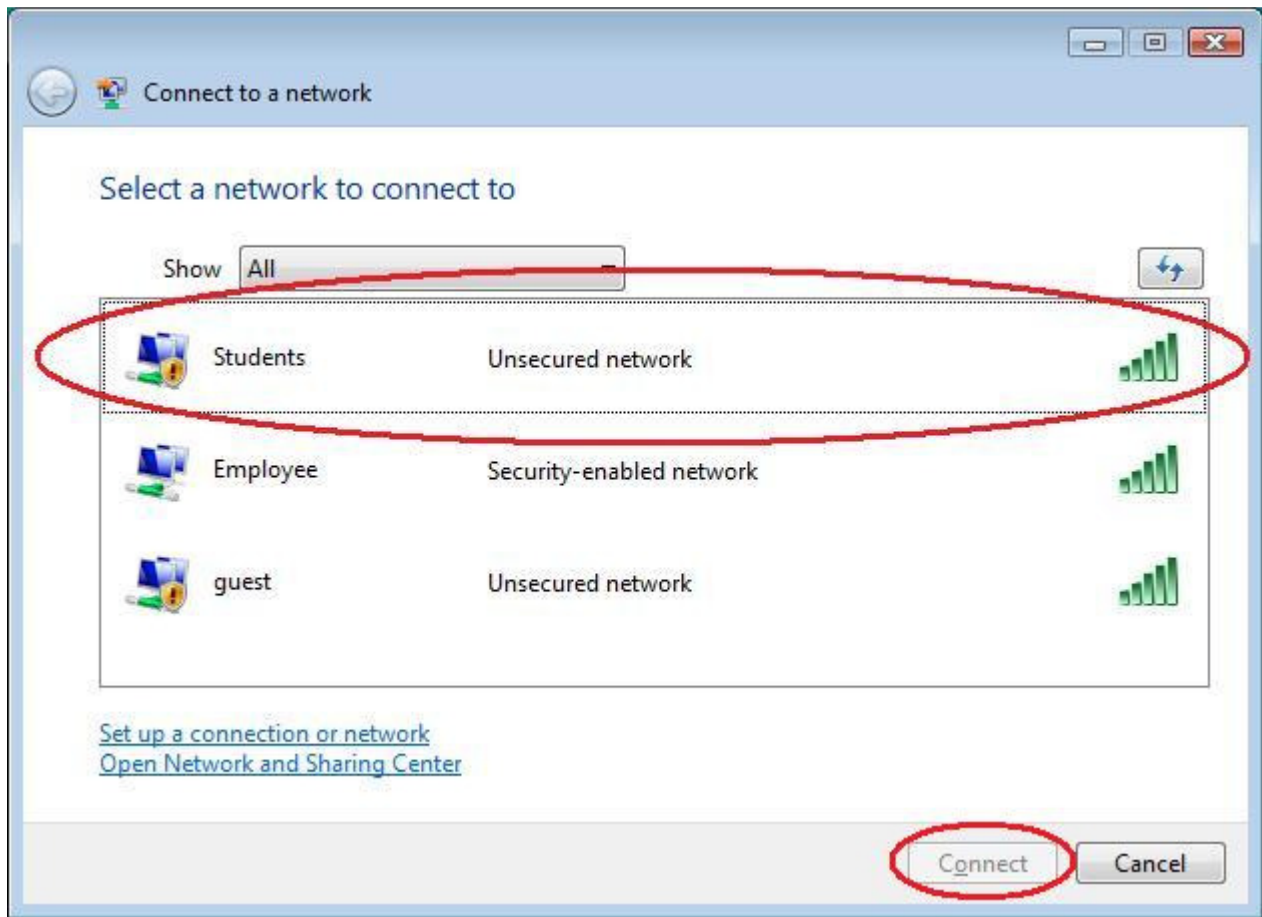
1. Enable WLAN (wireless radio) on laptop/PC -- each device is enabled differently -- slide on front/side typically or button (if not already enabled)  
This hardware switch can be implemented in many ways, but the most frequent implementations are either a hardware switch at the side of the laptop, a button around the keyboard area or a key combination, e.g., pressing the **SHIFT** and **F2** button at the same time. Users will need to check their hardware documentation to find out the specific solution implemented by their hardware vendor.
2. Look for a small icon that resembles two computer monitors in the system tray in the lower right hand corner by the clock.



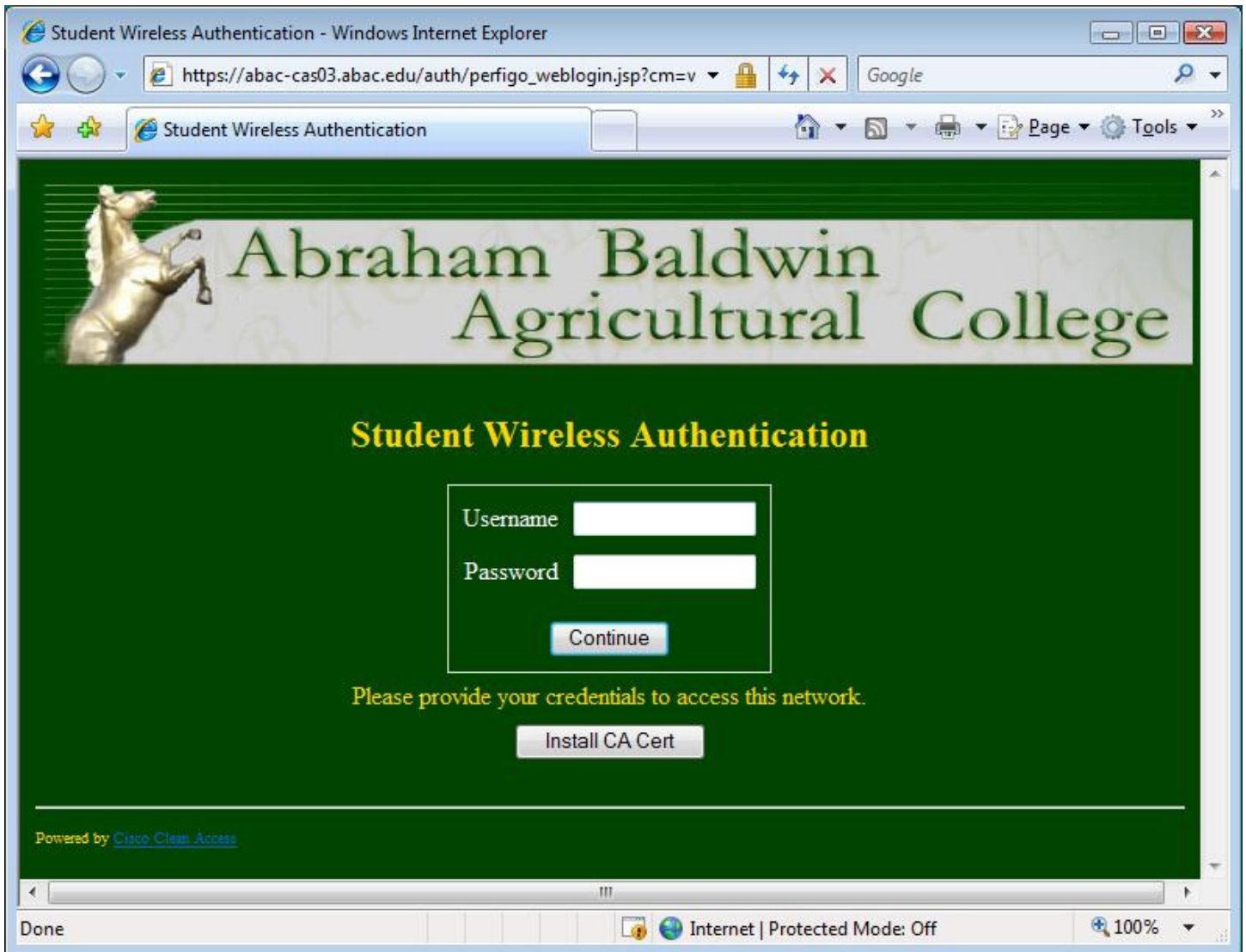
3. Single left mouse click the icon and then select **Connect to a network**.



4. Select the **Students** wireless network and click the **Connect** button.

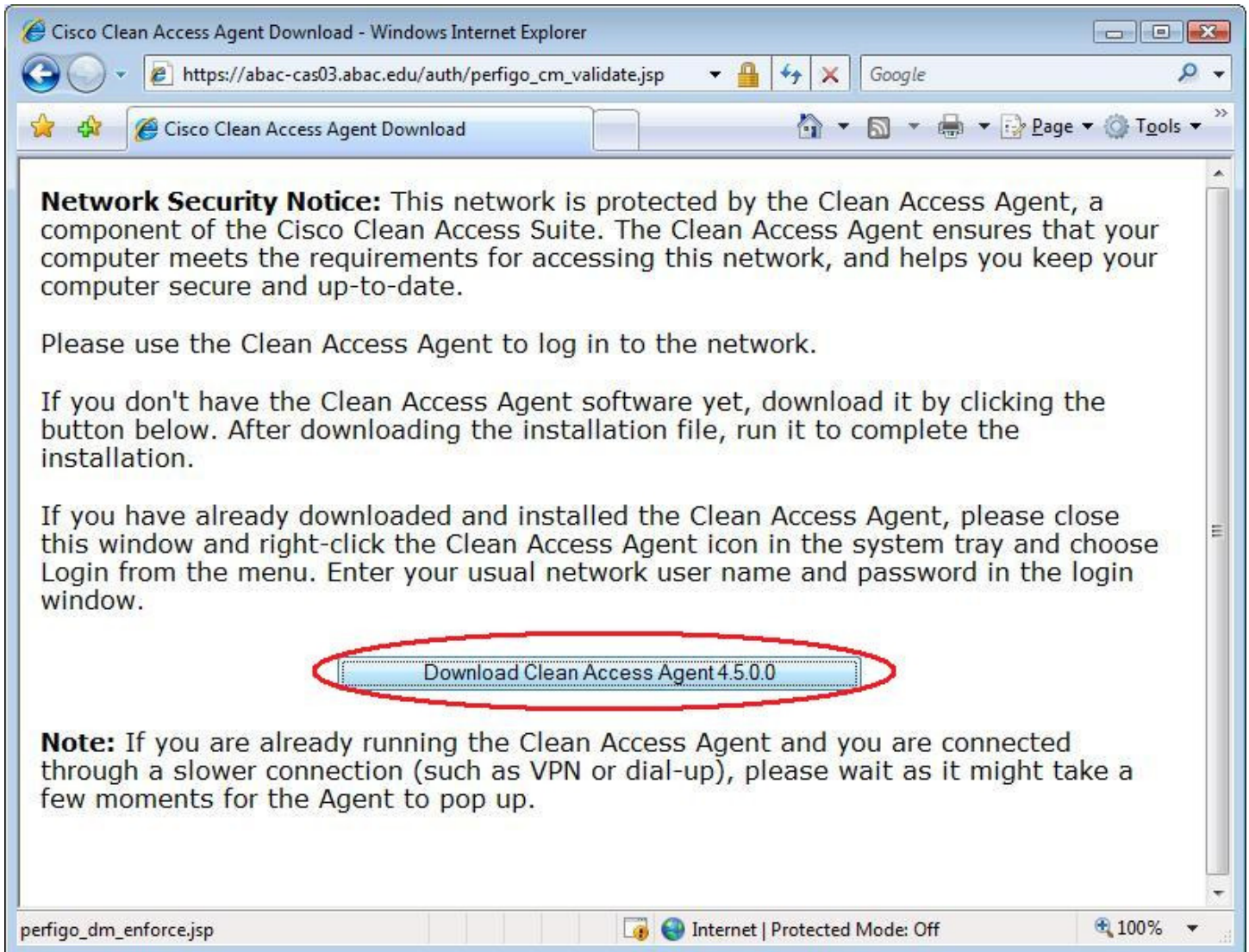


5. Open Internet Explorer. You should be redirected to the **Student Wireless Authentication** webpage.

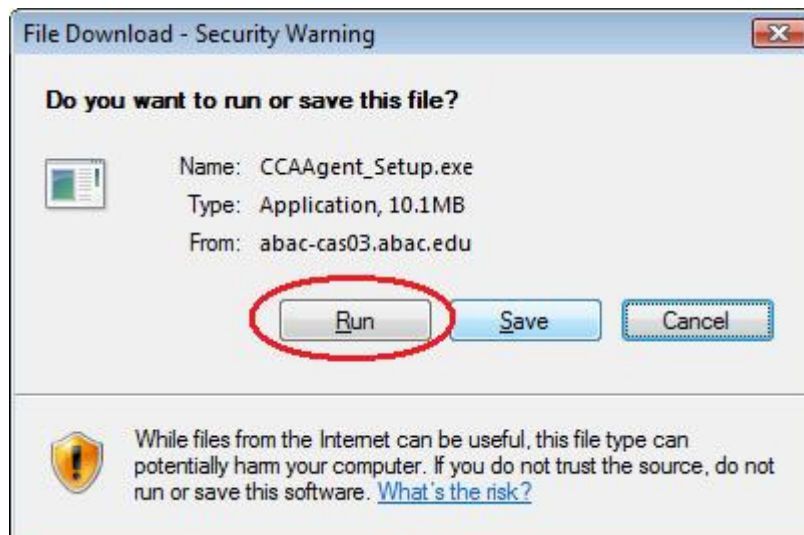


6. Enter Username and Password in all lowercase as follows: Username: Email username (the name before the @ symbol, i.e. [student#@stallions.abac.edu](mailto:student#@stallions.abac.edu)). Click the **Continue** button.

7. You should be redirected to the **Cisco Clean Access Agent Download** page. Click the **Download Clean Access Agent** download button.



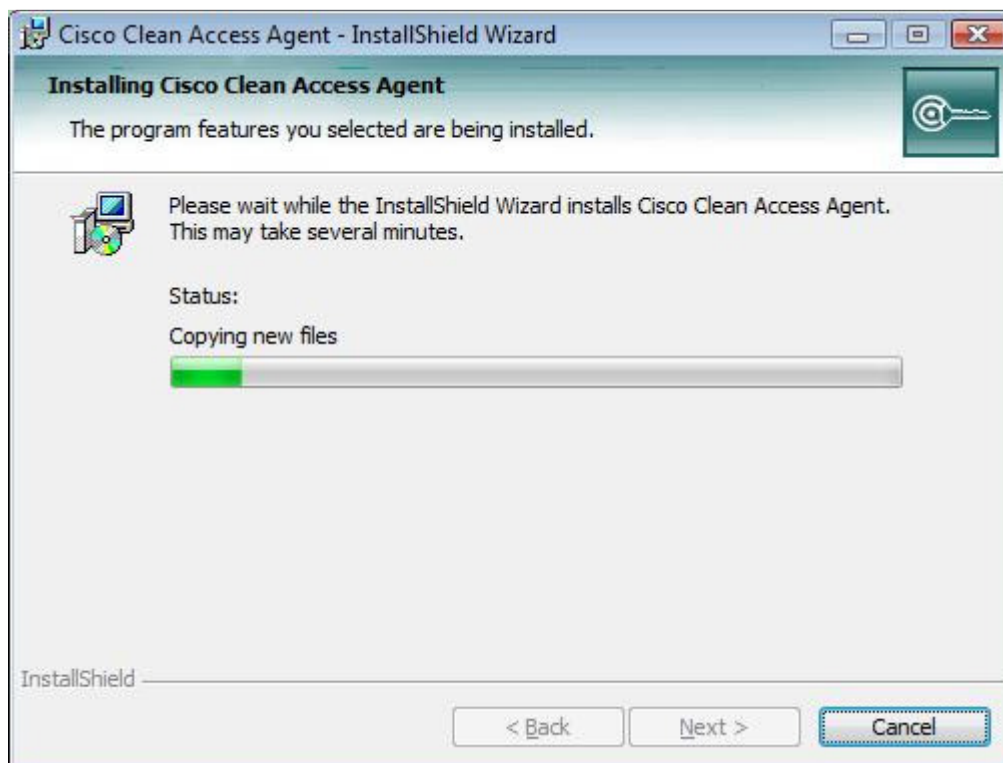
8. Click the **Run** button in the File Download – Security Warning dialog box.



9. In the next Security Warning dialog box select **Run**.



10. The Clean Access Agent will start to install at this point.



11. When the agent is finished installing you will be prompted to enter your username and password. These are the same credentials you entered in step 7. Then click the **Login** button. After you have logged in close Internet Explorer.

Cisco Clean Access Agent

## Clean Access Agent

Please enter your user name and password:

User Name :

Password :

Remember Me

Please select your authentication provider:

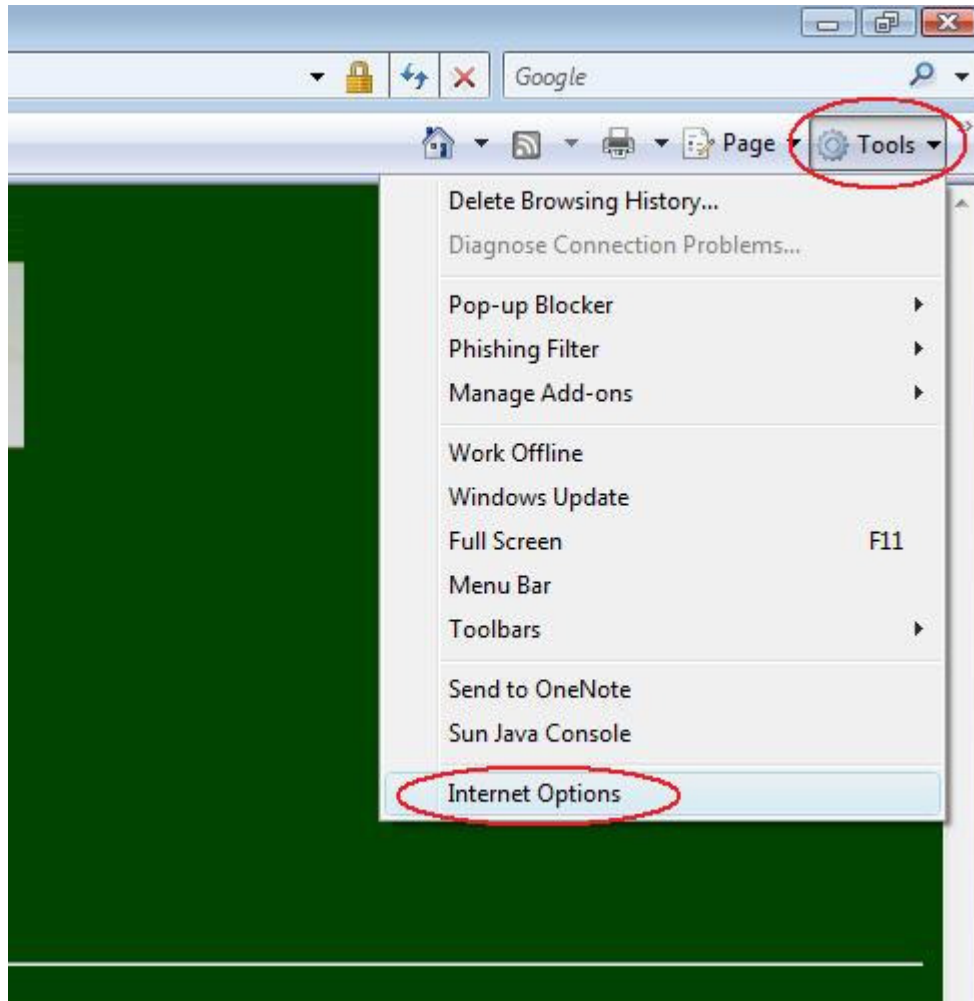
Student-LDAP

Login

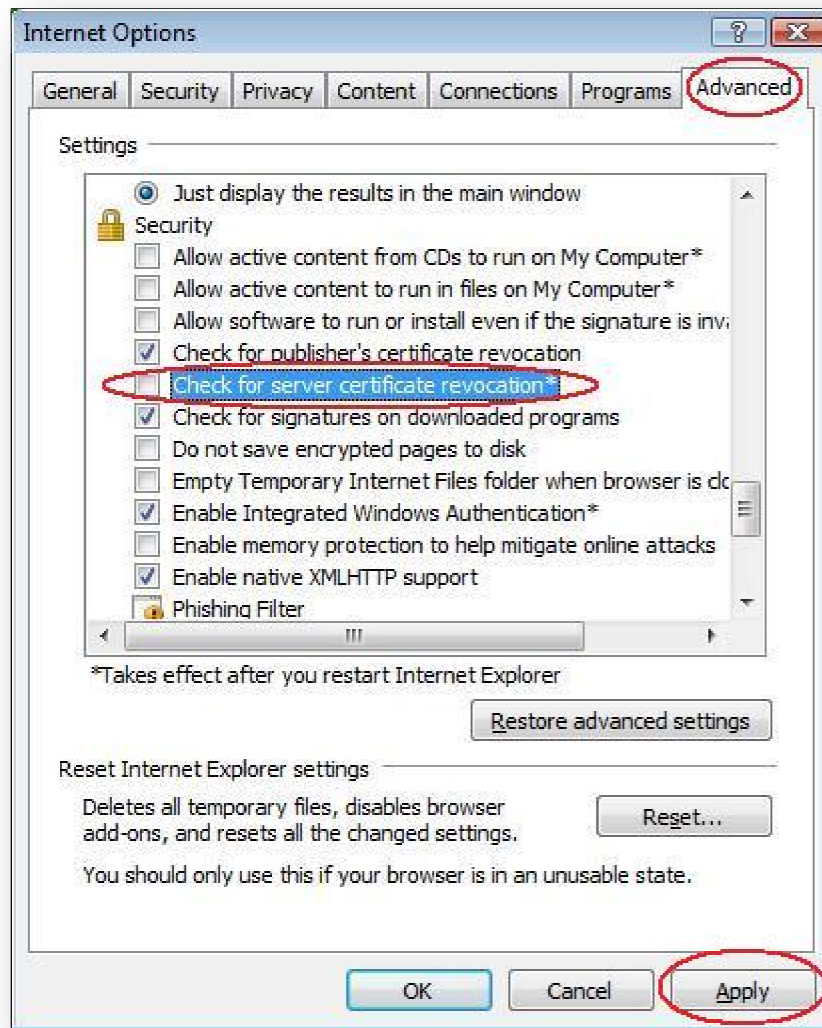
12. You may be prompted with a security alert window, if so select **Yes**. If you click yes and the previous window keeps popping up then select **No**. You should then receive the following error message.



13. Close the error message box and open Internet Explorer if it is not already open. Then click on Tools → Internet Options.



14. Navigate to the **Advanced** tab at the top. Then find the **Security** heading and uncheck the “**Check for server certificate revocation\***” checkbox.



15. Hit the **Apply** button and then **OK** and close Internet Explorer.
16. Restart Internet Explorer and you should be connected to the Internet.